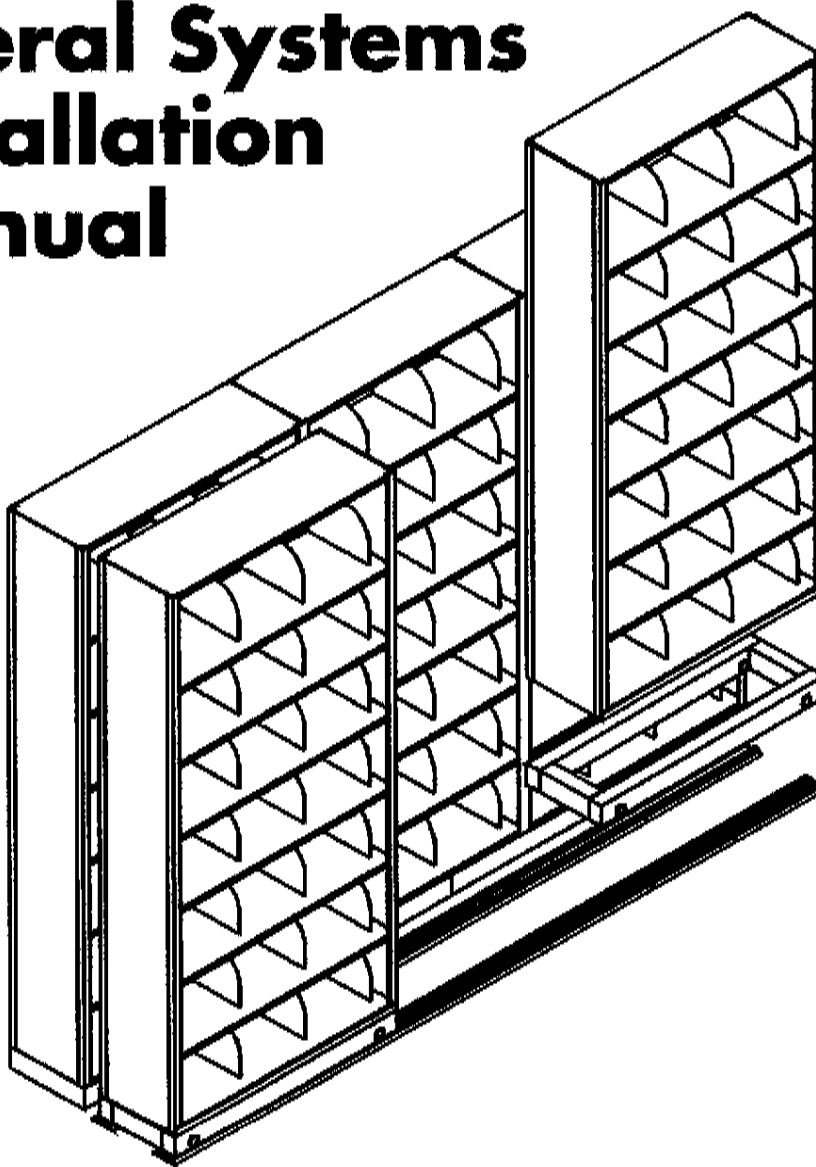


Space
PRO®
by **DIRECT LINE**

Lateral Systems Installation Manual



DIRECT LINE



- This system consists of no more than five different components: shelving, movable front carriage(s), track, end stops and optionally, rear fixed carriage(s).
- The rear sections may be placed on fixed bases if desired. This will provide a uniform height between the two rows of shelving. A uniform height between the two rows however is not an operational requirement with the Lateral System. In addition, virtually any kind of shelving or mixture thereof can be used.
- Because floor conditions and construction can vary widely, it is important that these instructions be followed to assure a system that functions safely and properly.
- Carriages/Bases over 8' long and tracks over 7' long are shipped with components to be joined on site. Assembly hardware is provided.
- **Shelving must always be mechanically fastened to mobile carriages for safe system operation!!!**

SYSTEM INSTALLATION WITH FIXED REAR CARRIAGES

(See page 3 for installation without fixed carriages)

1. Position fixed base in desired location.
2. Insert leveler feet into the threaded "L" brackets.
3. Track sections are labeled with alpha and numeric characters. The front of the system is labeled No. 1A. 1A connects to 1B and 1B connects to 1C and so on. The rear track starts with 2A and follows the same logic.
4. Position rear-most track assembly allowing sufficient clearance between fixed shelving and mobile units. *(Measure front to back depth of items to be stored on rear shelving to determine accurate spacing.)*
5. Position front-most track assembly using one of the mobile carriages to determine track separation. Tracks must be parallel and centered so that they extend equally beyond each end of the fixed shelving.
6. Using a 4' level laid on top of the tracks and starting at one end, move the level along to determine if there is a general slope to the floor in either direction. As you are doing this, check for any gaps between the underside of the track and floor.
7. Use shim to level the tracks and fill any low spots to prevent track deflection. Double-faced tape between shim layers will prevent them from separating and moving during system use.
8. With tracks properly levelled and spaced, use hardware provided to mechanically fasten the tracks to the floor.
- 8A. If end stops are needed, they will be shipped and found in the (#1) Hardware Box. The track bar stock will be pre-drilled and threaded in the correct location for easy and accurate attachment. Simply tighten as needed.
9. Position movable carriage with anti-tip bracket inserted into the anti-tip channel. Place your 4' level across it and the static carriage. Adjust the levelling feet on the static carriage so that it is level with the mobile carriage the entire length of the track. Use hardware provided to permanently fasten static carriage in position.
- 9A. IF SHELVING IS FOUR-POST TYPE: Assemble all shelving units making sure to use the single rivet shelf supports with the bottom shelves. Use Tek screws provided to mechanically fasten through the holes in the shelf supports and into the carriage top.



9B. IF SHELVING IS STACKABLE TYPE: If this lateral system was specified to be used with stackable tier shelving, carriages will be equipped with corner brackets to allow fastening with Tek screws through the tier base. If no base is used, pre-drill holes in the bottom-most tier and fasten directly to the carriage.

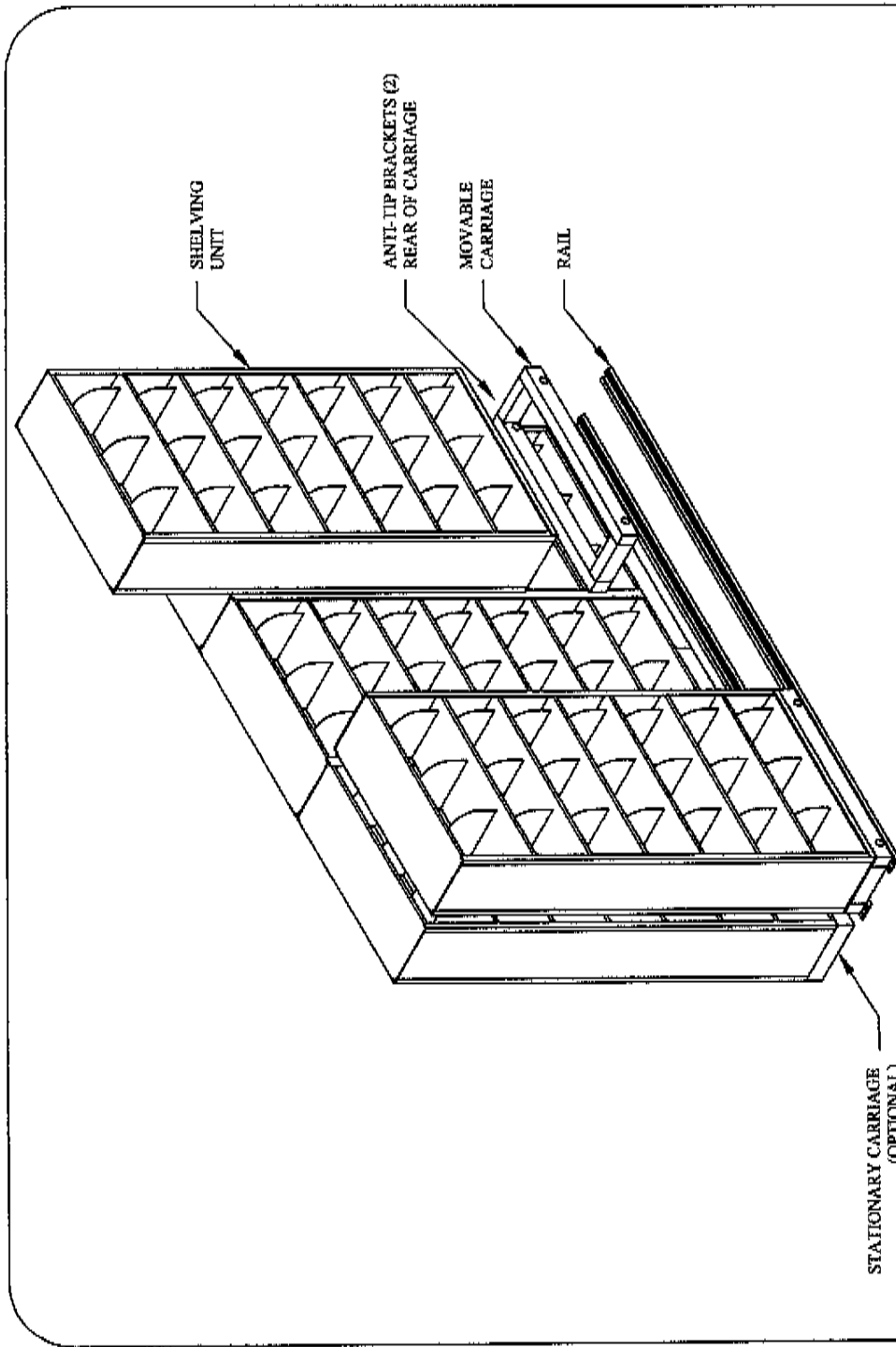
10. Load shelves from bottom up whenever possible.

IF SYSTEM IS TO BE INSTALLED WITHOUT FIXED REAR CARRIAGES:

1. Position and assemble stationary (rear-most) shelving units.
2. Track sections are labeled with alpha and numeric characters. The front of the system is labeled No. 1A. 1A connects to 1B and 1B connects to 1C and so on. The rear track starts with 2A and follows the same logic.
3. Position rear-most track assembly allowing sufficient clearance between fixed shelving and mobile units. *(Measure front to back depth of items to be stored on rear shelving to determine accurate spacing.)*
4. Position front-most track assembly using one of the mobile carriages to determine track separation. Tracks must be parallel and centered so they extend equally beyond each end of the fixed shelving.
5. Using a 4' level laid on top of the tracks and starting at one end, move the level along to determine if there is a general slope to the floor in either direction. As you are doing this, check for any gaps between the underside of the track and floor.
6. Use shims to level the tracks and fill any low spots to prevent track deflection. Double face tape between shim layers will prevent them from separating and moving during system use.
7. With tracks properly levelled and spaced, use hardware provided to mechanically fasten the tracks to the floor.
- 7A. If end stops are needed, they will be shipped and found in the (#1) Hardware Box. The track bar stock will be pre-drilled and threaded in the correct location for easy and accurate attachment. Simply tighten as needed.
8. Position movable carriage with anti-tip bracket inserted into the anti-tip channel.,
- 8A. **IF SHELVING IS FOUR-POST TYPE:** Assemble shelving units on the carriages making sure to use the single rivet shelf supports with the bottom shelves. Use Tek screws provided to mechanically fasten through the holes in the shelf supports and into the carriage top.
- 8B. **IF SHELVING IS STACKABLE TYPE:** If this lateral system was specified to be used with stackable tier shelving, carriages will be equipped with corner brackets to allow fastening with Tek screws through the tier base. If no base is used, pre-drill holes in the bottom-most tier and fasten directly to the carriage.
9. Load shelves from bottom up whenever possible.



SECTION: Lateral Specifications



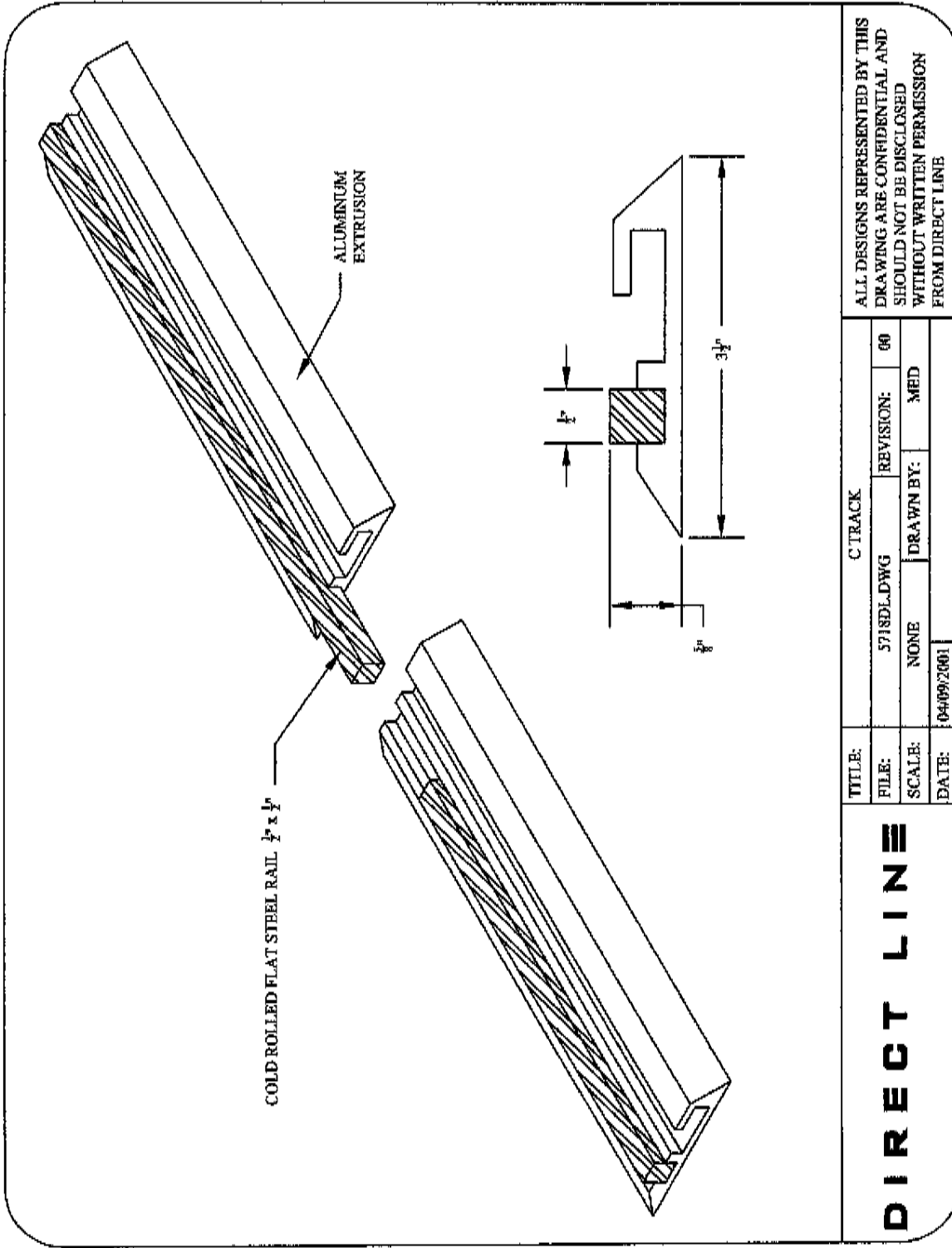
ALL DESIGNS REPRESENTED BY THIS DRAWING ARE CONFIDENTIAL AND SHOULD NOT BE DISCLOSED WITHOUT WRITTEN PERMISSION FROM DIRECT LINE

TITLE:	3X2 LATERAL FILING SYSTEM		
FILE:	3X2LAT.DWG	REVISION:	00
SCALE:	NONE	DRAWN BY:	MED
DATE:	04/09/2001		

DIRECT LINE



SECTION: Lateral Specifications



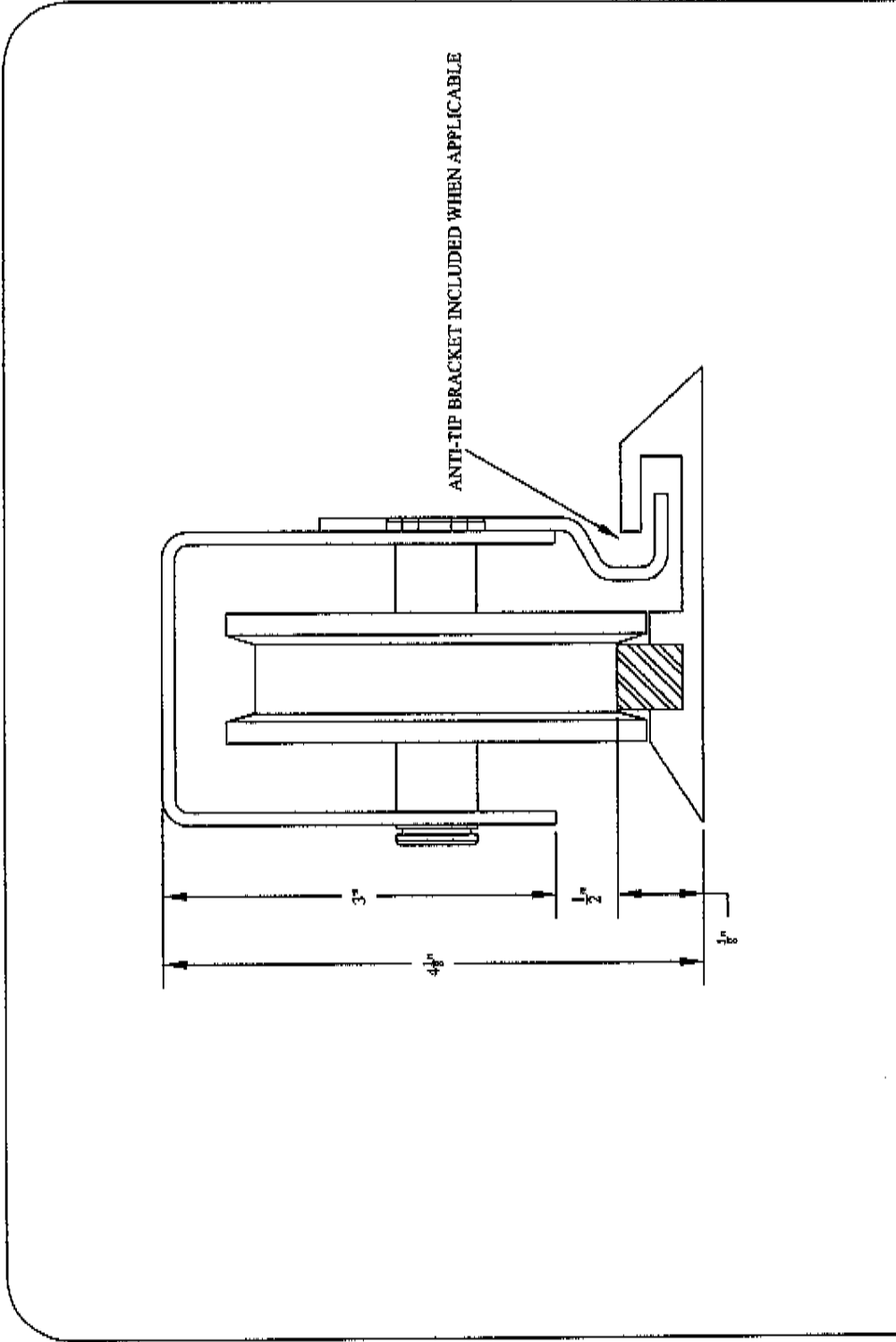
ALL DESIGNS REPRESENTED BY THIS DRAWING ARE CONFIDENTIAL AND SHOULD NOT BE DISCLOSED WITHOUT WRITTEN PERMISSION FROM DIRECT LINE

TITLE:		C TRACK	
FILE:	5718DL.DWG	REVISION:	00
SCALE:	NONE	DRAWN BY:	MED
DATE:	04/09/2001		

DIRECT LINE



SECTION: Lateral Specifications



ALL DESIGNS REPRESENTED BY THIS DRAWING ARE CONFIDENTIAL AND SHOULD NOT BE DISCLOSED WITHOUT WRITTEN PERMISSION FROM DIRECT LINE

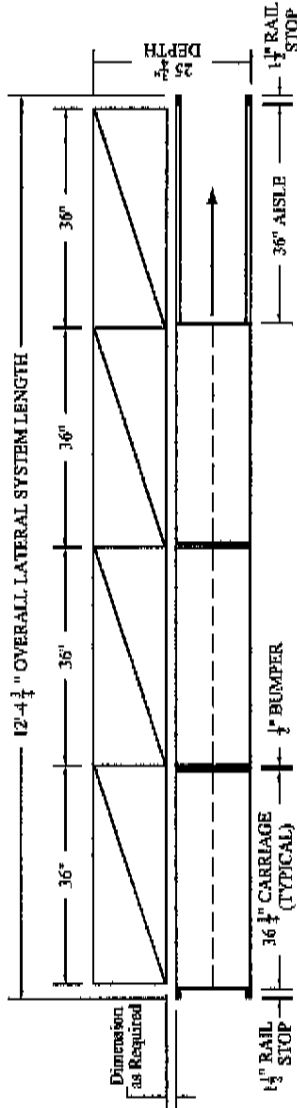
TITLE:	600IDL - C TRACK WITH 3" WHEELS		
FILE:	600IDL-C.DWG	REVISION:	00
SCALE:	NONE	DRAWN BY:	MED
DATE:	04/09/2001		

DIRECT LINE

DIRECT LINE



SECTION: Lateral Specifications



ALL DESIGNS REPRESENTED BY THIS DRAWING ARE CONFIDENTIAL AND SHOULD NOT BE DISCLOSED WITHOUT WRITTEN PERMISSION FROM DIRECT LINE

TITLE:	4X3 LATERAL FILE STORAGE SYSTEM		
FILE:	4X3LATERAL.DWG	REVISION:	00
SCALE:	1/2"=1'-0"	DRAWN BY:	MED
DATE:	06/06/2001		

DIRECT LINE